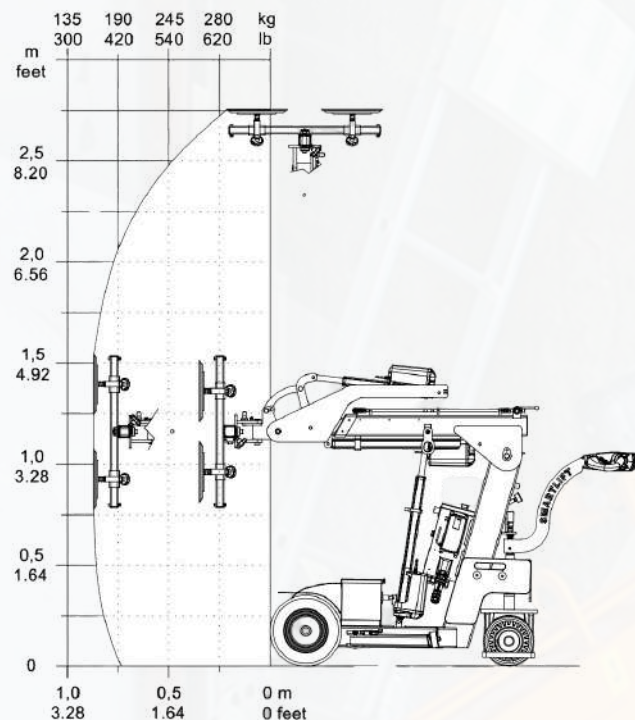


SMARTLIFT GLAZING ROBOTS

PRECISION-CONTROLLED ROBOTIC GLASS
INSTALLATION



SL 280

INDOOR GLAZING ROBOT



CAPACITY: 280 KG

IDEAL FOR: Narrow indoor job sites and production facilities.



SL 280 INDOOR

Probably the slimmest indoor glazing robot on the market today, it does not compromise on power and precision. The SL 280 Indoor is a powerful glazing robot designed specifically for indoor use, capable of handling elements weighing up to 280 kg (620 lb). With a lifting height of up to 270 cm (105 in.), it offers impressive reach. The rear-wheel drive enables exceptional maneuverability, making it highly agile in various settings. Additionally, the vacuum lifter can displace the load sideways by +/- 10 cm (4 in.), providing greater flexibility, especially in tight spaces within buildings or production facilities.

Model	Lifting Capacity Inside/Outside Arm	Lifting Height	Arm Extension	Inclination	Turning Radius	Suction Pads	L x W x H	Net Weight
SL 280	280/60 kg	275 cm	50 cm	49° back 104° front	116 cm	4x Ø 30 cm	217x63x133 cm	490 kg